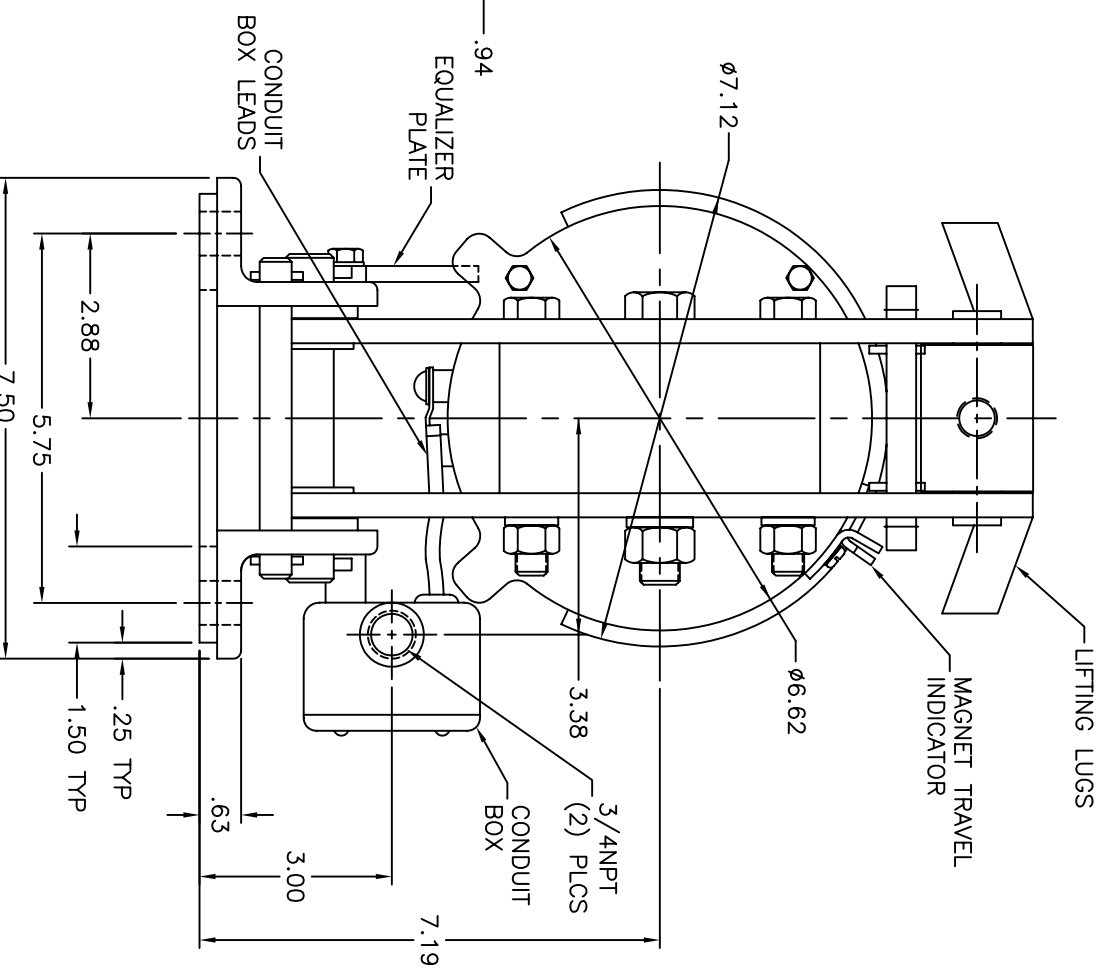
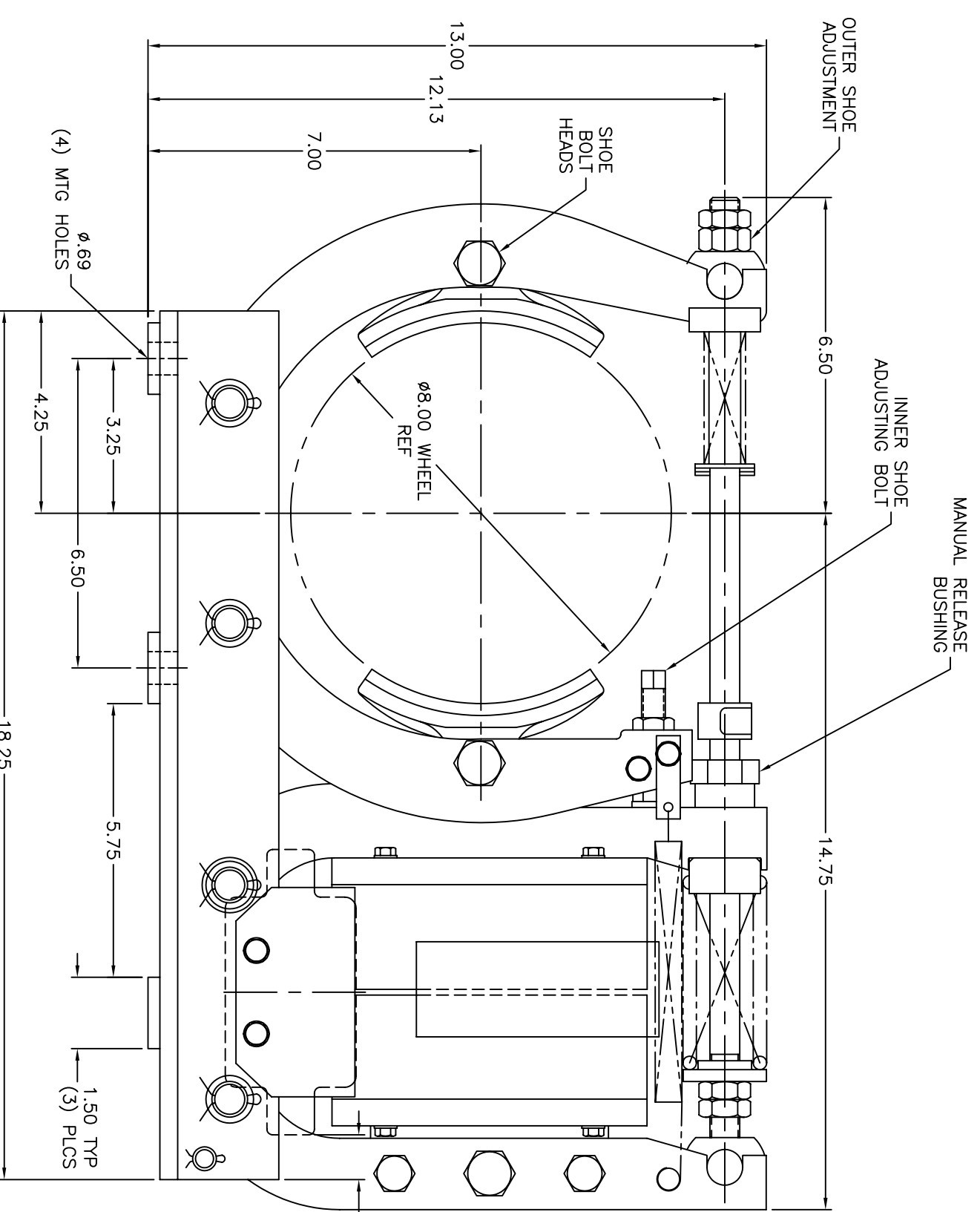


REV.	DESCRIPTION	REVISION	DATE	BY
B	UPDATED DRAWING BORDER		03/07/06	J.S.B.

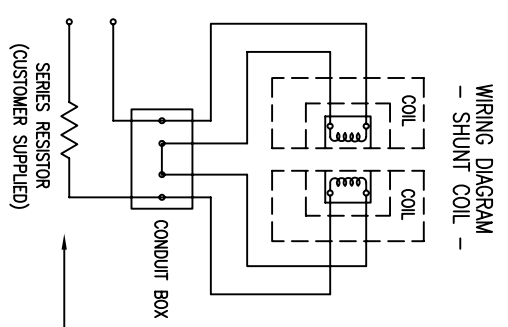


NON-STANDARD TORQUE RATINGS:

TORQUE LB.FT.	MAIN SPRING LENGTH (INCHES)
65	4.31
75	4.25

COIL DATA - SHUNT OPERATION

OPERATION	VOLTS DC	AMPS	RESISTOR REQ'D
CONTINUOUS OPERATION	32 VDC	1.0 AMPS	177 OHMS
INTERMITTENT OPERATION	40 VDC	1.28 AMPS	132 OHMS



NOTES:

1. STANDARD TORQUE RATING: 100 LB.FT. (MAIN SPRING LENGTH OF 4.00")
2. NORMAL MAGNET TRAVEL: .06"
3. WEIGHT OF BRAKE W/O WHEEL: 100 LBS.
4. STANDARD RIGHT HAND MOUNTING SHOWN. FOR LEFT HAND MOUNTING, POSITIONS OF CONDUIT BOX, EQUALIZER PLATE, AND SHOE BOLT HEADS ARE REVERSED.

THIRD ANGLE PROJECTION	UNLESS OTHERWISE SPECIFIED: SURFACE FINISH: 32	PROPERTY OF METEK AUTOMATION & PROCESS TECHNOLOGIES. ALL RIGHTS RESERVED. DRAWING IS DISTRIBUTION IS STRICTLY PROHIBITED BY FEDERAL L.M.I.	DR. J.S.B.	TITLE
	TOLERANCE ALLOWANCE: +/- .0010 ON 3 PLACE DECIMALS +/- .0005 ON 4 PLACE DECIMALS +/- .30 MIN. ON ALL ANGLES	METEK AUTOMATION & PROCESS TECHNOLOGIES Clawson, MI 48017 U.S.A.	DATE 3/28/91 APP. J.S.B.	DIMENSION DRAWING TM83 BRAKE
			DATE 3/07/06 SCALE 1/2	DRAWING NO. E008115001 REV. SIZE B C