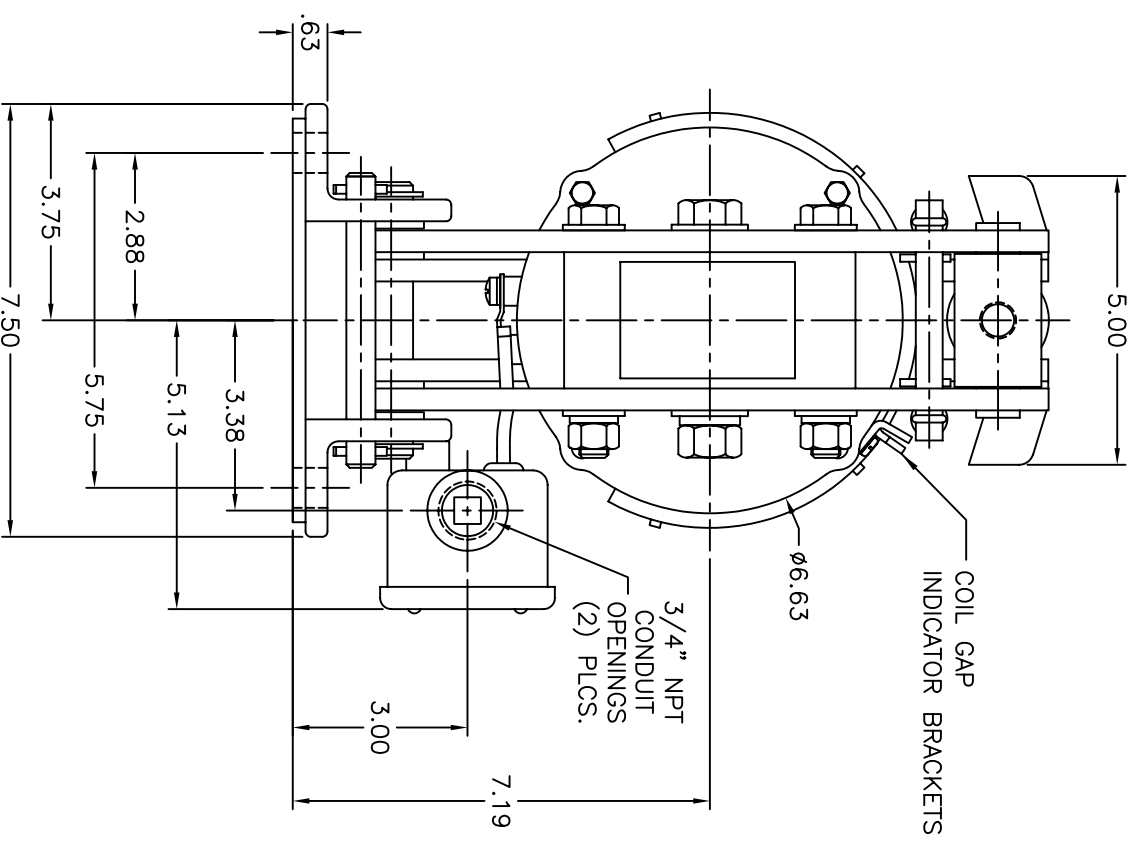
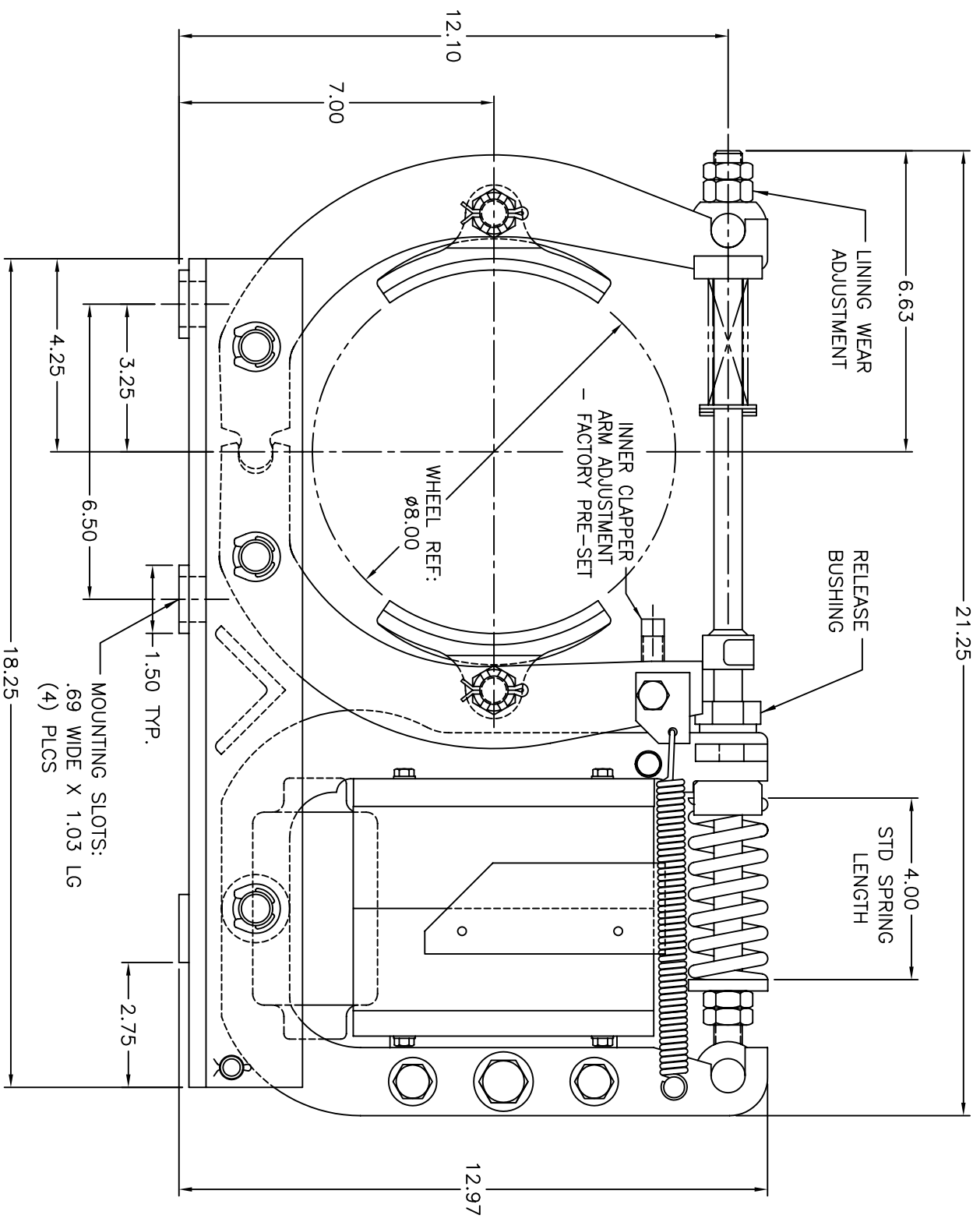


REV.	DESCRIPTION	REVISION	DATE	BY

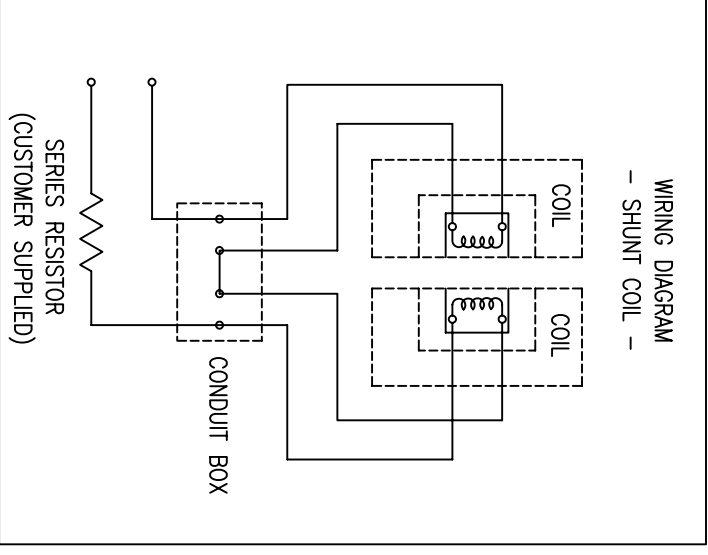


NOTES:

1. STANDARD TORQUE RATING: 100 LB.FT. (MAIN SPRING LENGTH OF 4.00")
2. NORMAL MAGNET TRAVEL: .06"
3. WEIGHT OF BRAKE W/O WHEEL: 100 LBS.
4. STANDARD RIGHT HAND MOUNTING SHOWN. FOR LEFT HAND MOUNTING, POSITIONS OF CONDUIT BOX AND SHOE BOLT HEADS ARE REVERSED.

COIL DATA - SHUNT OPERATION		
CONTINUOUS OPERATION	INTERMITTENT OPERATION	
VOLTS DC	32 VDC	40 VDC
AMPS	1.0 AMPS	1.28 AMPS
RESISTOR REQ'D	177 OHMS	132 OHMS
250VDC		

NON-STANDARD TORQUE RATINGS:		
TORQUE LB.FT.	MAIN SPRING LENGTH (INCHES)	
65	4.31	
75	4.25	



THIRD ANGLE PROJECTION	DR. J.S.B.	TITLE
	DATE 01/20/98	DIMENSION DRAWING
SURFACE FINISH 63	APPROVED	TMSC8 BRAKE SHUNT COIL
UNLESS OTHERWISE SPECIFIED	DATE	
TOLERANCE ALLOWANCE	SCALE	
UNLESS OTHERWISE SPECIFIED:	7/16	
+/-. 0.010 ON 2 PLACE DECIMALS		
+/-. 0.0005 ON 4 PLACE DECIMALS		
+/-. 30 MIN. ON ALL ANGLES		
	DRAWING NO.	REV. SIZE
AMETEK AUTOMATION & PROCESS TECHNOLOGIES	PD-0090901	0 C
CLAWSON, MI 48017 U.S.A.		