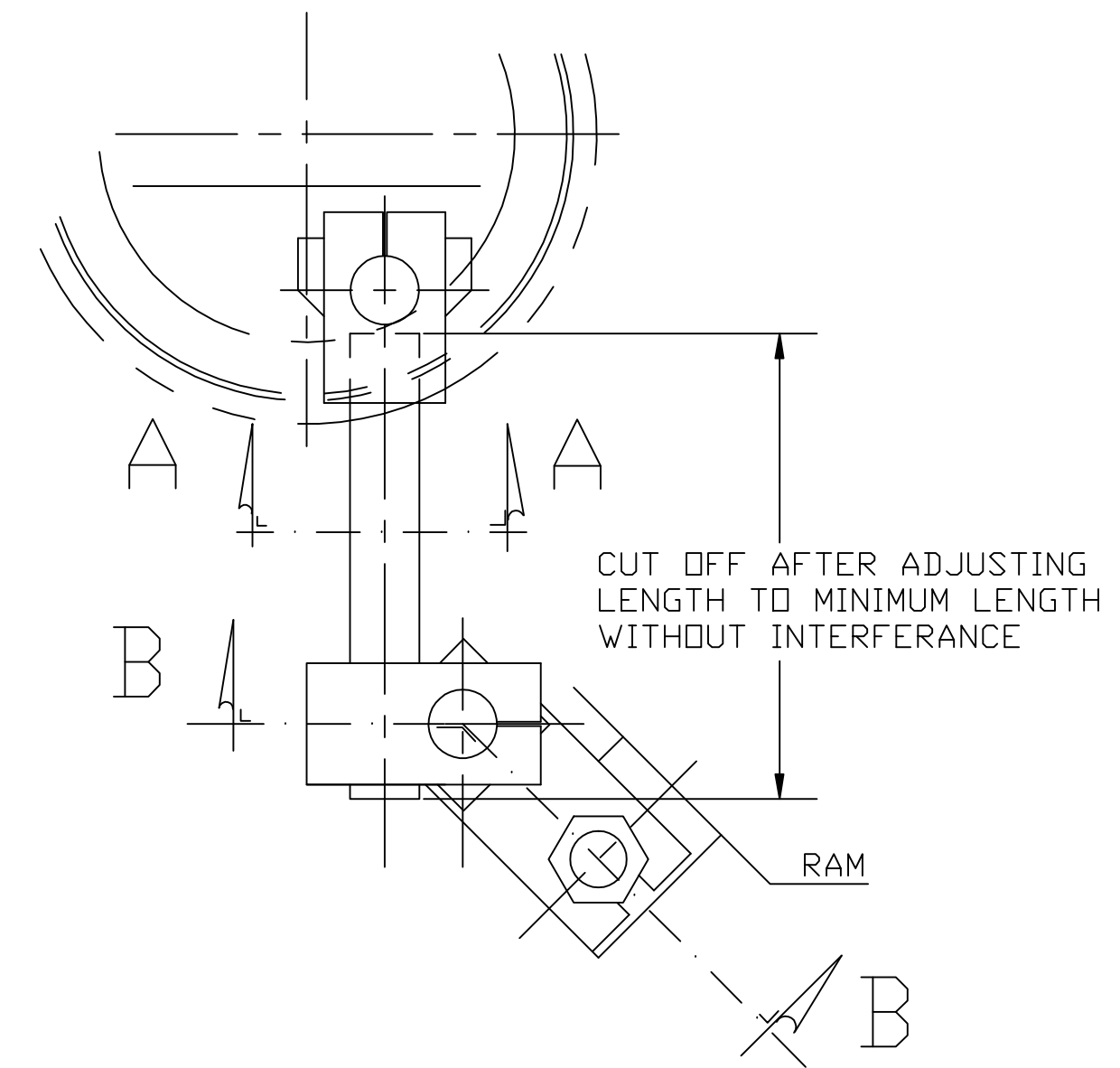
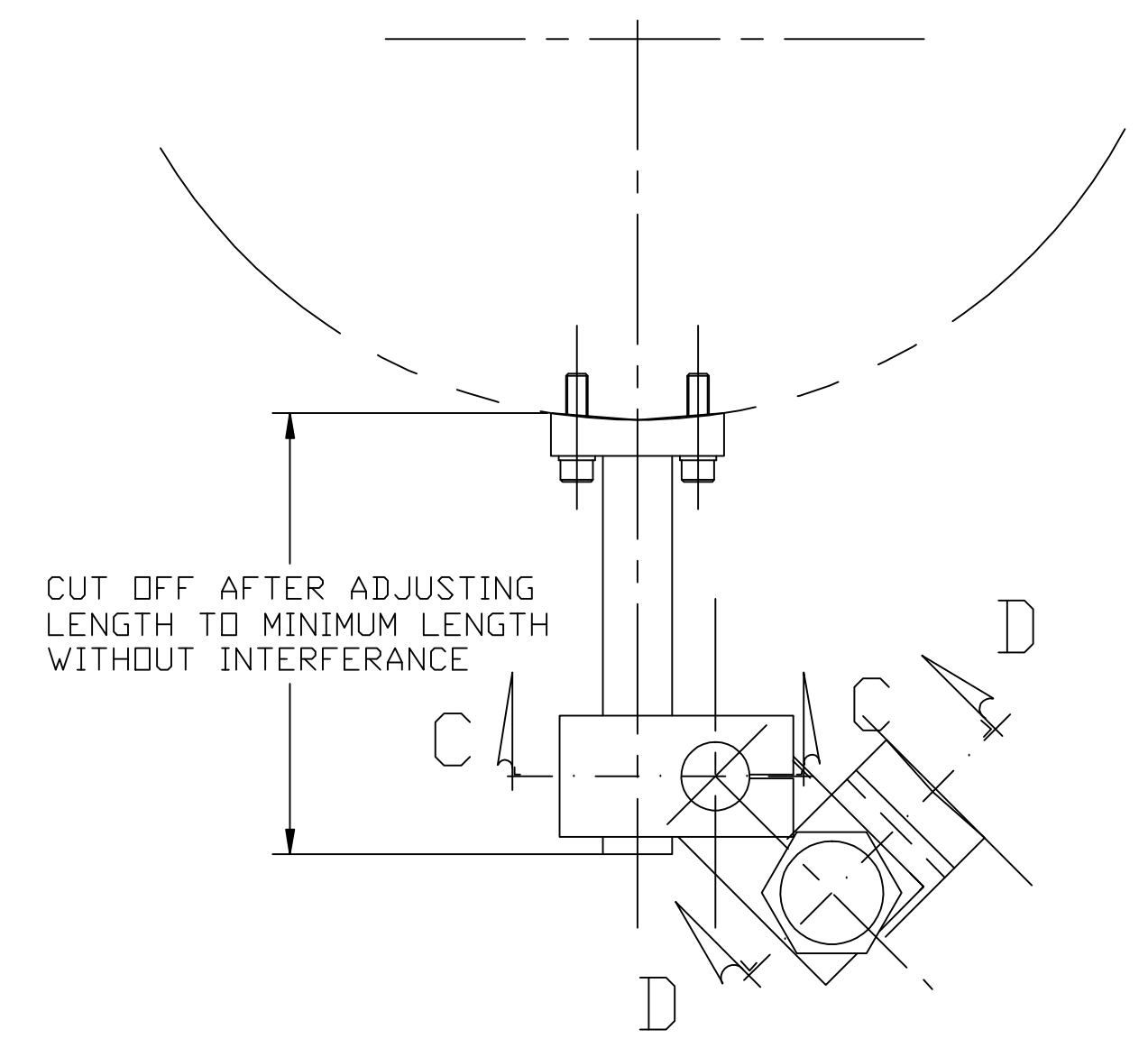


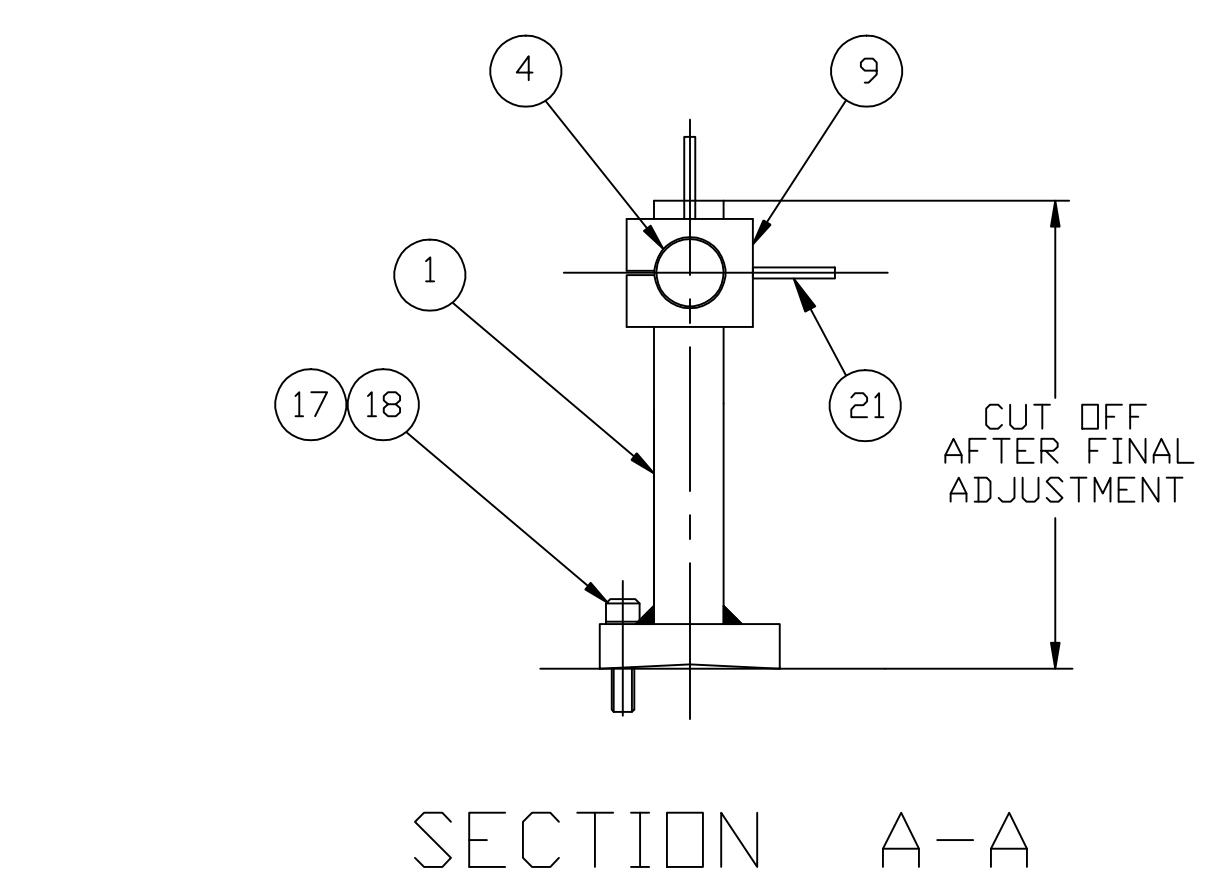
REV.	DESCRIPTION	REVISION	DATE	BY
A	ADDED ITEM 21 & NOTES 11 & 9		11/29/94	WAK
B	BOLTS WERE 3/8-24		8/18/95	WAK



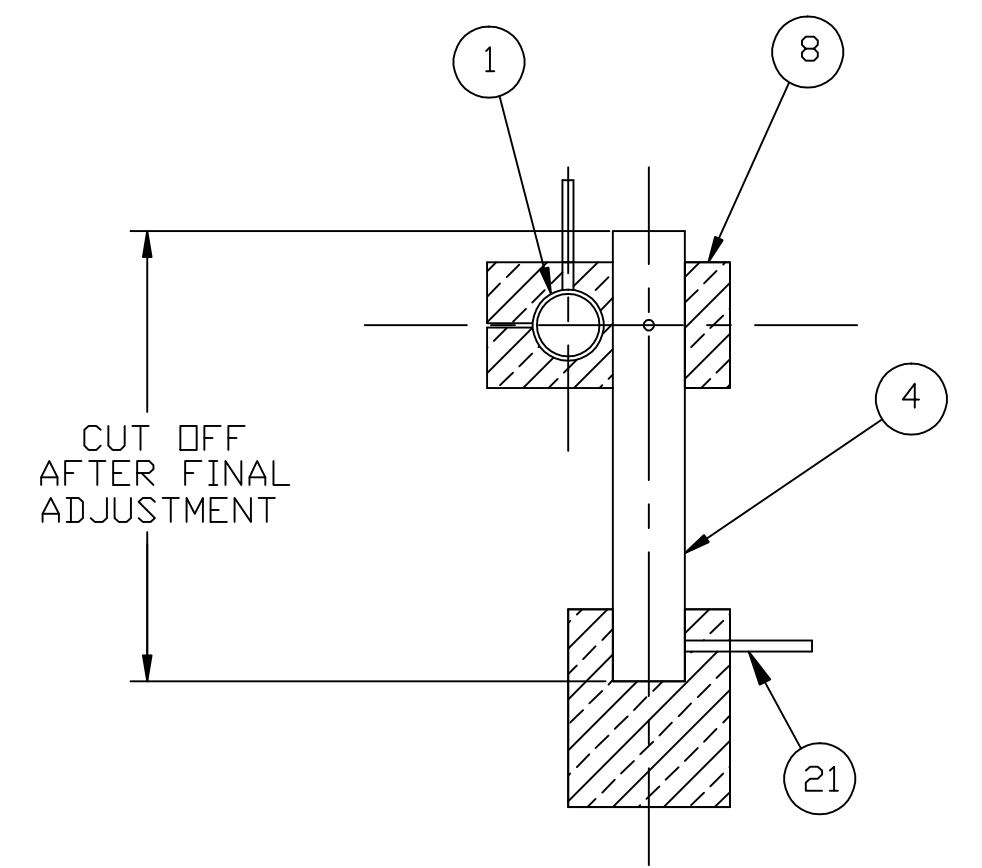
PLAN VIEW (FIG #1)
(CONVENTIONAL CRANK ACTION PRESS)



PLAN VIEW (FIG. #2)
(GUIDED PUSH ROD TYPE PRESS)



SECTION A-A



SECTION C-C

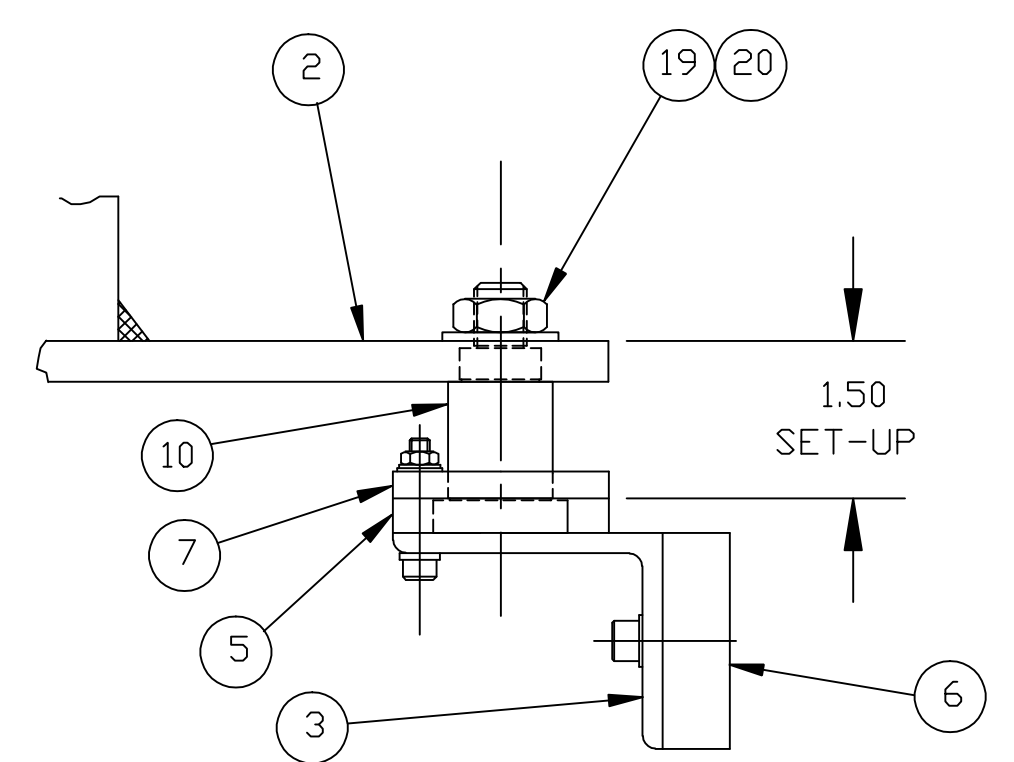
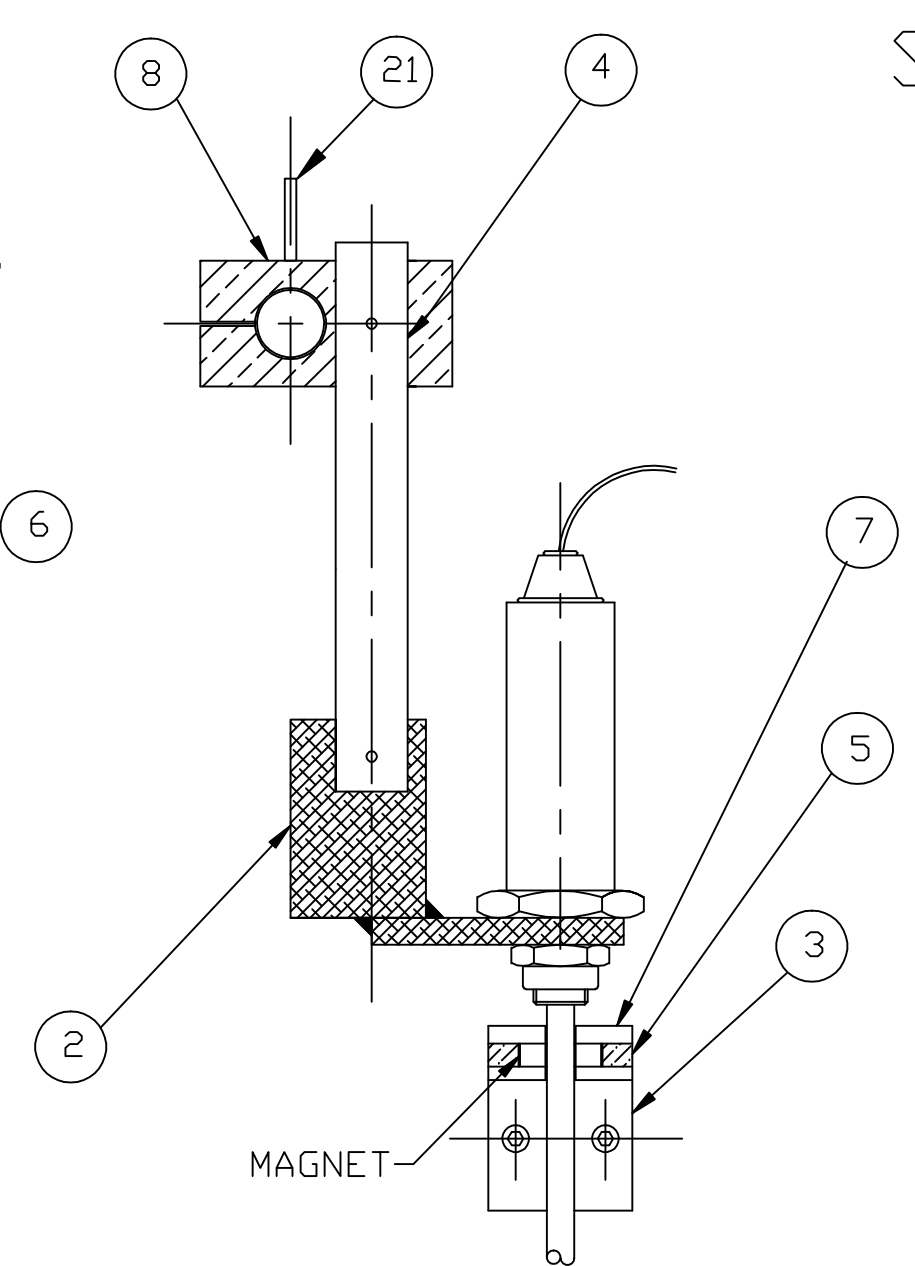
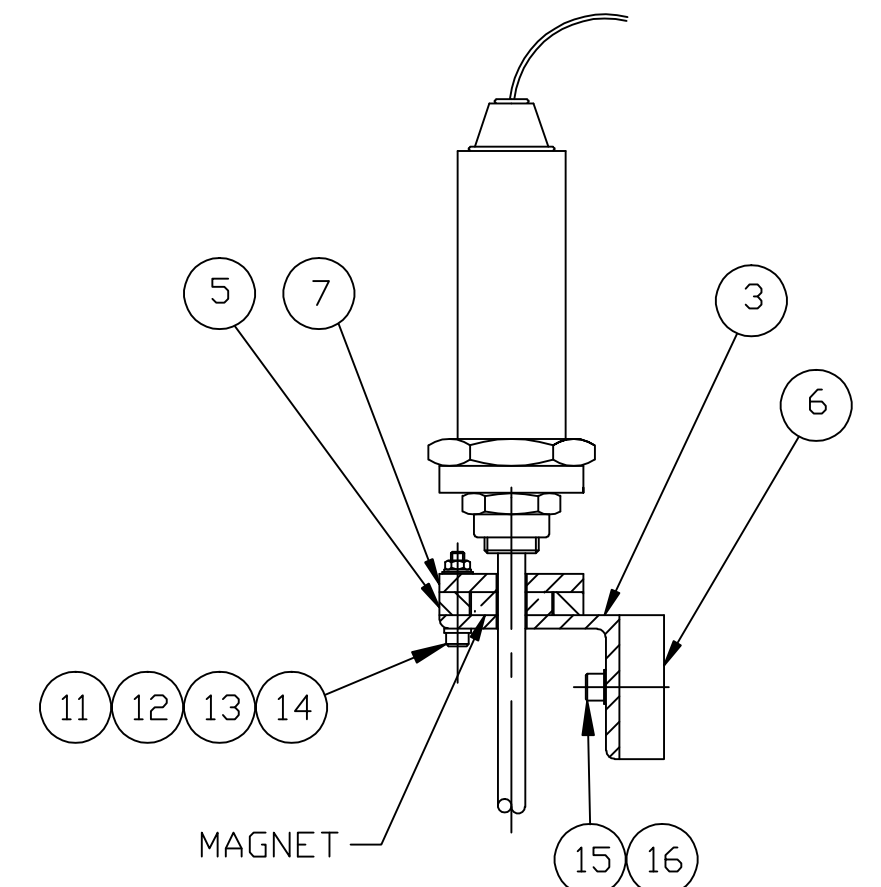


FIG. 3
THROW AWAY SET-UP TOOL



SECTION B-B



SECTION D-D

FIG. # 1
CONVENTIONAL CRANK ACTION PRESS
RAM-SET UNIVERSAL BRACKET
MOUNTING INSTRUCTIONS

NOTE: ALL MEASUREMENTS AND CLEARANCES ARE WITH RESPECT TO SLIDE-UP, STROKE UP

ONCE THE MEASUREMENTS AND CLEARANCES HAVE BEEN DETERMINED:

1. ATTACH ITEM 1 TO SURFACE OF PITTMAN SCREW PINTEL
2. ASSEMBLE ITEM 9 TO ITEM 1
3. ASSEMBLE ITEM 4 (HORIZONTAL) TO ITEM 9
4. ASSEMBLE ITEM 8, 4 (VERTICAL) AND 2 AS SHOWN IN FIGURE 1
5. ADJUST AND TIGHTEN CAP SCREWS
6. ALIGN TRANSDUCER/MAGNET BRACKET SUB-ASSEMBLY TO MOVABLE MEMBER OF SLIDE. IF ITEM 6 IS BEING USED AS A SPACER INSTEAD OF A TAPPING PLATE, DRILL TAPS OUT FOR BOLT CLEARANCE

SLIDE MUST BE IN A MAXIMUM UP POSITION FOR THIS STEP!

7. REMOVE AND DISCARD SET-UP STUD (ITEM 10), INSERT MAGNET AND RE-ATTACH MAGNET COVER PLATE (ITEM 7)

NOTE: A MAGNET AND SEPARATE SPACER IS INCLUDED WITH THE TRANSDUCER. THE MAGNET HAS (3) DOTS ON THE SIDE OF ALUMINUM DISK. DISCARD THE INCLUDED SPACER

8. ATTACH TRANSDUCER TO ITEM 2. (DO NOT GRIP METAL CAN WITH PLIERS...USE FLATS)
9. ATTACH CABLE COIL ASSEMBLY FOOT (FROM CABLE KIT) TO ITEM 2

BE CERTAIN THE COIL AND BRACKET ASSEMBLY IS CLEAR OF ANY INTERFERENCE WHEN THE PRESS STROKES TO TDC WITH SLIDE ADJUSTMENT UP!

10. AFTER YOU ARE SURE EVERYTHING IS FREE FROM INTERFERENCE, TRIM THE EXCESS TUBING AND SECURE CAP SCREWS.

11. USING EXISTING HOLES IN BLOCKS AND A 1/8" DRILL, DRILL THRU THE BOOM RODS AND INSTALL THE 1/8" ROLLPINS.

FIG. # 2
GUIDED PUSH ROD PRESS
RAM-SET UNIVERSAL BRACKET
MOUNTING INSTRUCTIONS

NOTE: ALL MEASUREMENTS AND CLEARANCES ARE WITH RESPECT TO SLIDE-UP, STROKE UP

ONCE THE MEASUREMENTS AND CLEARANCES HAVE BEEN DETERMINED:

1. ATTACH ITEM 1 TO SURFACE OF PUSH ROD AS SHOWN
2. ASSEMBLE ITEM 8, 4 (VERTICAL) AND 2 AS SHOWN IN FIGURE #1
3. ADJUST AND TIGHTEN CAP SCREWS
4. ALIGN TRANSDUCER/MAGNET BRACKET SUB-ASSEMBLY TO MOVABLE MEMBER OF SLIDE IF ITEM 6 IS BEING USED AS A SPACER INSTEAD OF A TAPPING PLATE, DRILL TAPS OUT FOR BOLT CLEARANCE.

SLIDE MUST BE IN MAXIMUM UP POSITION FOR THIS STEP!

5. REMOVE AND DISCARD SET-UP STUD (ITEM 10), INSERT MAGNET AND RE-ATTACH MAGNET COVER PLATE (ITEM 7)

NOTE: A MAGNET AND SEPARATE SPACER IS INCLUDED WITH THE TRANSDUCER. THE MAGNET HAS THREE(3) DOTS ON THE SIDE OF ALUMINUM DISK. DISCARD THE INCLUDED SPACER.

6. ATTACH TRANSDUCER TO ITEM 2. (DO NOT GRIP METAL WITH PLIERS... USE FLATS)
7. ATTACH CABLE COIL ASSEMBLY FOOT (FROM CABLE KIT) TO ITEM 2

BE CERTAIN THE COIL AND BRACKET ASSEMBLY IS CLEAR OF ANY INTERFERENCE

8. AFTER YOU ARE SURE EVERYTHING IS FREE FROM INTERFERENCE, TRIM THE EXCESS TUBING AND SECURE CAP SCREWS

9. USING EXISTING HOLES IN BLOCKS AND A 1/8" DRILL, DRILL THRU THE BOOM RODS AND INSTALL THE 1/8" ROLLPINS.

ITEM	DESCRIPTION	PART NO.	QTY.
* BRACKET ASSY MAGNET MOUNT - SD0463000			
(A) *	21 ROLLPIN - 1/8 X 1-3/4	04564234	5
*	20 NUT HEX 1/2-13	04562008	1
*	19 FLAT WASHER 1/2	04563012	1
*	18 LOCKWASHER SPLIT MED 5/16	04563002	2
*	17 SCREW SOCKET HEAD CAP 5/16-18 X 1-1/4	04560373	2
*	16 LOCKWASHER SPLIT MED 1/4	04563001	3
*	15 SCREW SOCKET HEAD CAP 1/4-20 X 3/4	04560089	3
*	14 NUT HEX #10-32	04562057	2
*	13 FLAT WASHER #10	04563072	2
*	12 LOCKWASHER SPILT MED #10	04563082	2
*	11 SCREW SOCKET HEAD CAP 10-32 X 1-1/4	04560838	2
*	10 STUD - SETUP	M0810200	1
(B) *	9 BLOCK PEDESTAL W/ 3/8-16 X 1-3/4 BOLTS	M0810000	1
*	8 BLOCK CONNECTING W/ 3/8-16 X 1-3/4 BOLTS	M0810100	1
*	7 CAP MAGNET	M0809900	1
*	6 SPACER MAGNET BRACKET	M0809800	1
*	5 HOUSING MAGNET	M0809700	1
*	4 BOOM ROD - 18" LONG	M0809500	2
(B) *	3 BRACKET MAGNET MOUNT	M0809600	1
*	2 BRACKET WELDMENT W/ 3/8-16 X 1-3/4 BOLT	SD0458400	1
*	1 PEDESTAL BASE AND TUBE WELDMENT	SD0458300	1

THIRD ANGLE PROJECTION	THIS DRAWING OR MATERIAL IS SUBMITTED TO YOU IN TRUST AND CONFIDENCE AND IS UNDERSTOOD THAT THE MATERIAL SHALL NEVER BE USED IN ANY MANNER DETRIMENTAL TO OUR COMPANY.	DR. WAK	TITLE
SURFACE FINISH UNLESS OTHERWISE SPECIFIED		DATE 7/14/94	RAM-SET UNIVERSAL BRACKET MOUNTING KIT
TOLERANCE ALLOWANCE UNLESS OTHERWISE SPECIFIED:		APP.	
+/- 0.010 ON 2 PLACE DECIMALS		DATE	SCALE
+/- 0.005 ON 3 PLACE DECIMALS		NONE	DRAWING NO. SD0441300
+/- 0.0005 ON 4 PLACE DECIMALS		SCALE	REV. SIZE
+/- 30 MIN. ON ALL ANGLES			B D

