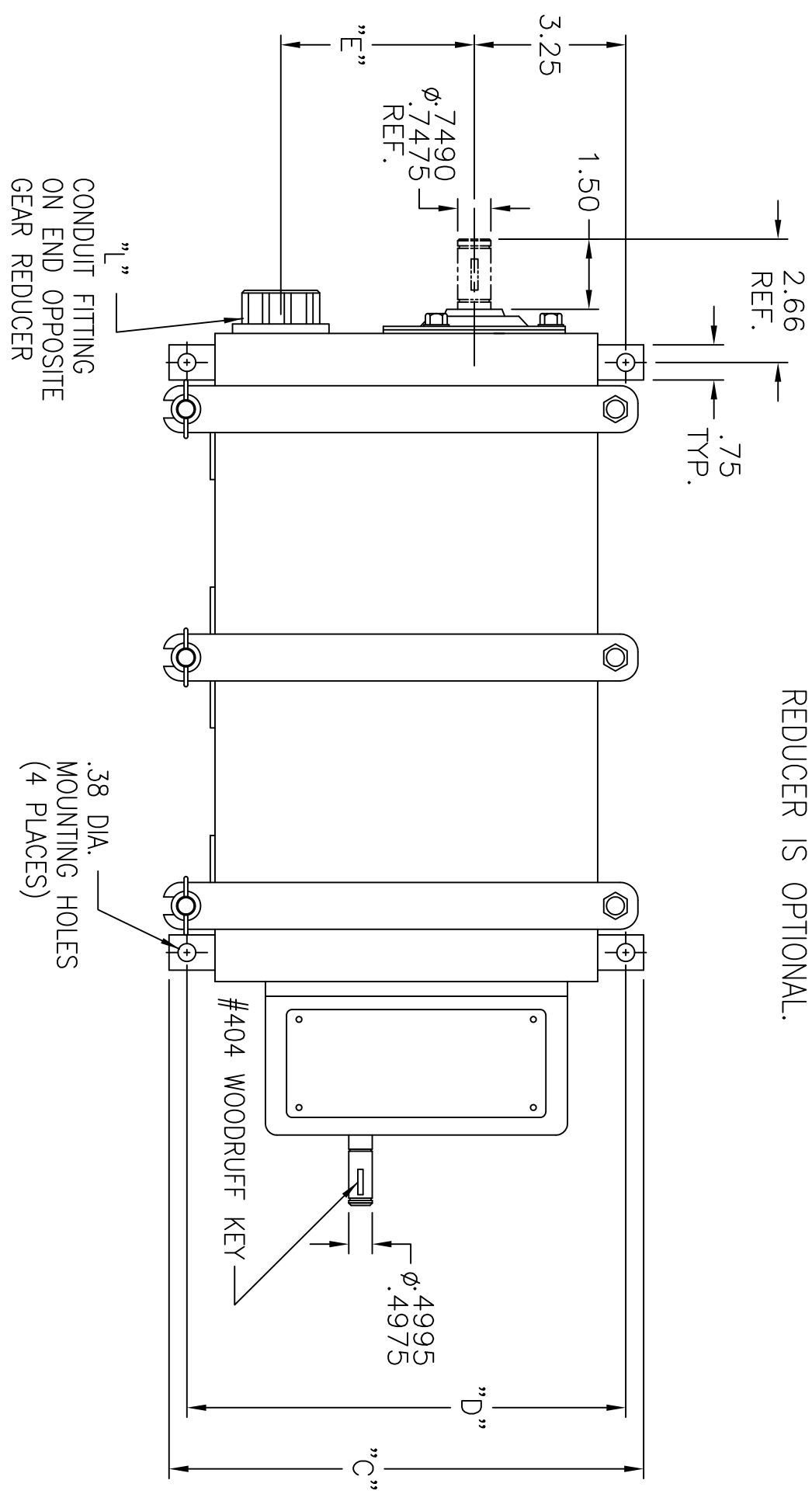
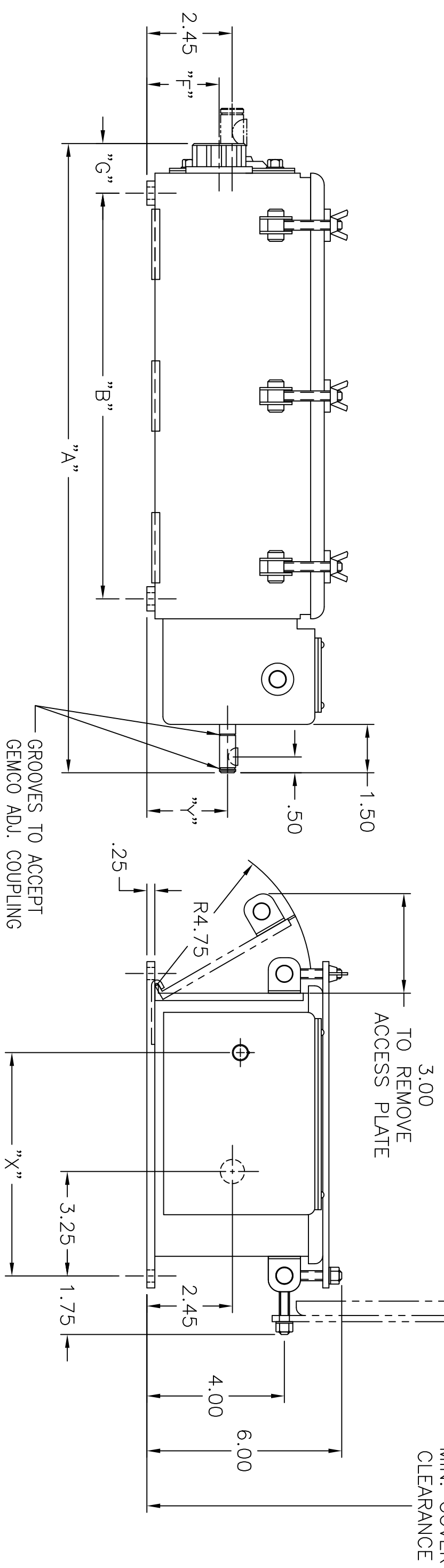


NOTE: ASSEMBLY SHOWN IS STANDARD.  
REDUCER CAN BE PLACED AT EITHER END.  
SHAFT EXTENSION ON END OPPOSITE  
REDUCER IS OPTIONAL.



RATIO	"X"	"Y"
.854166:1	6.17	2.45
.898438:1	6.17	2.45
1:1	4.88	2.45
1:1.1	5.88	2.45
1:2.5:1	4.83	2.45
1:3.5:1	5.35	2.45
1:5:1	5.25	2.45
1:1.5	5.25	2.45
1:1.6	4.88	2.45

RATIO	"X"	"Y"
1.6:1	4.88	2.45
1.875:1	4.69	2.45
2:1	4.75	2.45
1:2	4.75	2.45
2.2:1	5.25	2.45
2.45833:1	5.33	2.45
2.5:1	5.00	2.45
1:2.5	5.00	2.45
3:1	4.92	2.45



RATIO	"X"	"Y"
1:3	4.92	2.45
4:1	6.25	2.45
1:4	6.25	2.45
4.5:1	6.10	2.45
4.75:1	5.38	2.45
5:1	6.50	2.45
1:5	6.50	2.45
5.5:1	6.63	2.45
6:1	6.42	2.45
1:6	6.42	2.45
6.66:1	6.38	2.45
7:1	6.67	2.45
1:7	5.46	2.51
7.04:1	6.56	2.45
7.25:1	6.60	2.45
7.5:1	6.67	2.45
8:1	6.63	2.45
1:8	5.69	2.45
8.5:1	6.11	2.45
10:1	5.94	2.26
1:10	5.54	2.65
10.2:1	6.50	2.45
10.5625:1	6.08	2.45
11:1	5.94	2.79
12:1	5.94	2.39
13:1	5.94	2.45
14:1	5.94	2.51
15:1	5.94	2.57
16:1	5.94	2.64
18:1	5.94	2.76
18.4:1	6.33	2.45
20:1	5.94	2.26
24:1	5.94	2.39
25:1	5.94	2.45
26:1	5.94	2.45
28:1	5.94	2.51
30:1	5.94	2.57
32:1	5.94	2.64
34:1	5.94	2.69
35:1	5.94	2.70
36:1	5.94	2.76
40:1	5.94	2.26
48:1	5.94	2.39
50:1	5.94	2.45
60:1	5.94	2.57
64:1	5.94	2.64
72:1	5.94	2.45

RATIO	"X"	"Y"
75:1	5.94	2.14
80:1	5.94	2.82
96:1	5.94	2.70
100:1	5.94	2.45
104:1	5.94	2.64
105:1	5.94	2.51
108:1	5.94	2.83
120:1	5.94	2.33
125:1	5.94	2.29
130:1	5.94	2.26
133:1	5.94	2.17
150:1	5.94	2.14
169:1	5.94	2.45
185:1	5.94	2.98
200:1	5.94	2.45
204.38	6.38	2.45
287:1	5.94	3.29
300:1	5.94	2.14
324:1	5.94	2.45
400:1	5.94	2.45
500:1	5.94	2.29
600:1	5.94	2.14
700:1	5.94	2.36
720:1	5.94	2.26
800:1	5.94	3.07
900:1	5.94	2.45
1000:1	5.94	2.92
1080:1	5.94	2.64
1200:1	5.94	2.76
1400:1	5.94	2.61
1440:1	5.94	3.23
1600:1	5.94	2.45

CIRCUITS	"A"	"B"	"C"	"D"	"E"	"F"	"G"	"H"	"L"
2-4	12.53	5.45	10.12	9.38	3.69	2.06	1.58	13.64	.75
5-6	15.08	7.89	10.12	9.38	3.69	2.06	1.69	13.64	1.25
7-8	17.52	10.33	10.12	9.38	3.69	2.06	1.69	13.64	1.25
9-12	22.40	15.21	10.12	9.38	3.69	2.06	1.69	13.64	1.25
13-16	28.86	21.62	12.12	11.38	4.69	2.81	1.74	15.64	2.00
17-20	33.75	26.50	12.12	11.38	4.69	2.81	1.74	15.64	2.00
21-24	38.62	31.38	12.12	11.38	4.69	2.81	1.74	15.64	2.00
25-28	45.02	37.80	12.12	11.38	4.69	2.81	1.74	15.64	2.00
29-32	49.91	42.66	12.12	11.38	4.69	2.81	1.74	15.64	2.00
33-36	54.79	47.54	12.12	11.38	4.69	2.81	1.74	15.64	2.00
37-40	59.67	52.42	12.12	11.38	4.69	2.81	1.74	15.64	2.00

THIRD ANGLE PROJECTION  
SURFACE FINISH 63  
UNLESS OTHERWISE SPECIFIED  
TOLERANCE ALLOWANCE  
UNLESS OTHERWISE SPECIFIED:  
+/- .0010 ON 2 PLACE DECIMALS  
+/- .0005 ON 4 PLACE DECIMALS  
+/- .30 MIN. ON ALL ANGLES

DR. W.A.K.  
DATE 12/28/72  
APP.  
AUTOMATION & PROCESS TECHNOLOGIES  
Clawson, MI 48017 U.S.A.

TITLE  
DIMENSION DRAWING  
NEMA 4 RCLS  
2-40 CIR. W/SDGR  
DRAWING NO. D-0040300  
REV. SIZE F C

REV.	DESCRIPTION	DATE	BY
F	REDRAWN IN CAD - ADDED ALL RATIOS TO DATE	08/12/94	R.J.P.

REVISION