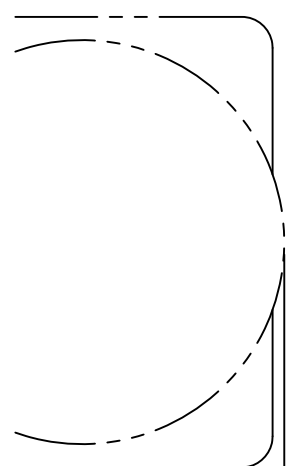


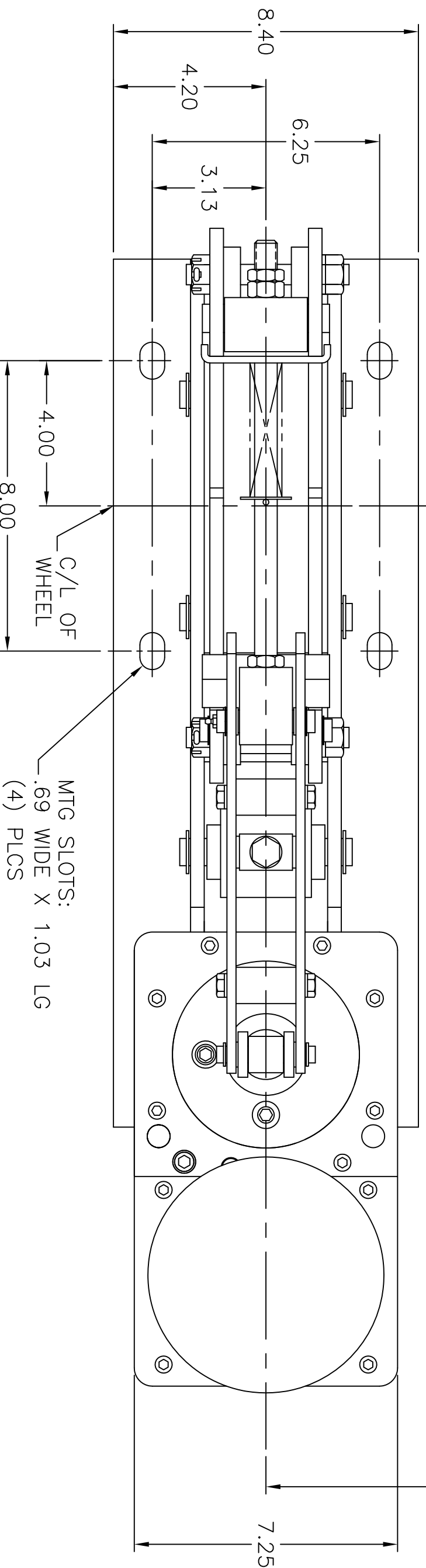
REV.	DESCRIPTION	DATE	BY
C	UPDATED DRAWING BORDER	12/15/03	J.S.B.

18.74
OPTIONAL
ACTUATOR
POSITION

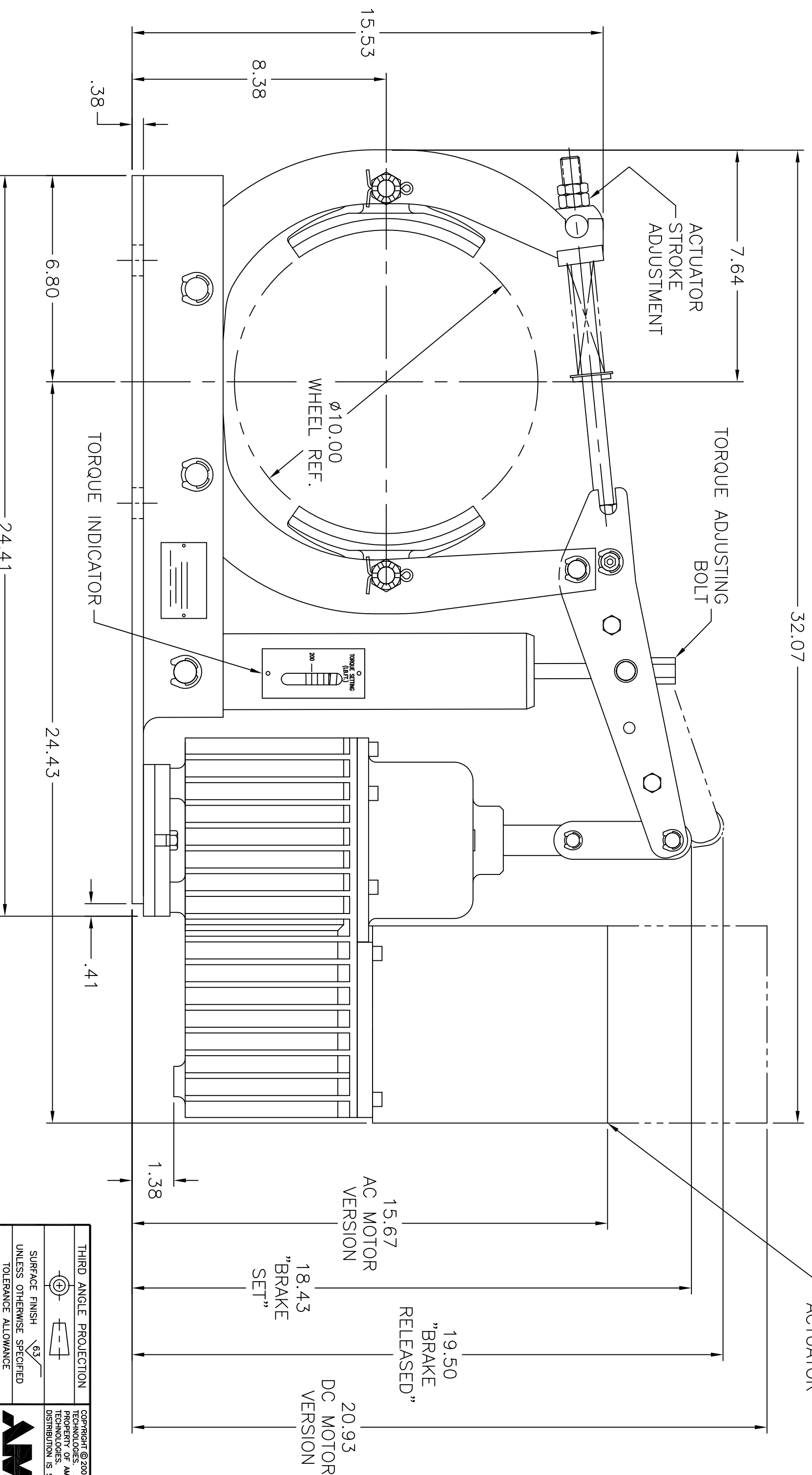


9.32
OPTIONAL
ACTUATOR
POSITION

NOTE: ACTUATOR AVAILABLE IN
THREE POSITIONS: INLINE (AS SHOWN), ROTATED
90° RIGHT (AS SHOWN), OR ROTATED 90° LEFT



ELECTRO-THRUST
ACTUATOR



NOTE:
STANDARD TORQUE RATING: 200 LB.FT.

THIRD ANGLE PROJECTION	DR. G.S.L.	TITLE
SURFACE FINISH $\sqrt{63}$	DATE 10/06/95	DIMENSION DRAWING
UNLESS OTHERWISE SPECIFIED	APP. J.S.B.	ET10 BRAKE
TOLERANCE ALLOWANCE	DATE 12/15/03	DRAWING NO. PD-0074600
0.010 ON 2 PLACE DECIMALS	SCALE	REV. SIZE
0.0005 ON 4 PLACE DECIMALS	5/16	C C
+/- .30 MIN. ON ALL ANGLES		

COPYRIGHT © 2003, AMETEK AUTOMATION & PROCESS TECHNOLOGIES. ALL RIGHTS RESERVED. REPRODUCTION OR DISTRIBUTION IS STRICTLY PROHIBITED BY FEDERAL LAW.

AMETEK
AUTOMATION & PROCESS TECHNOLOGIES
Clawson, MI 48017 U.S.A.