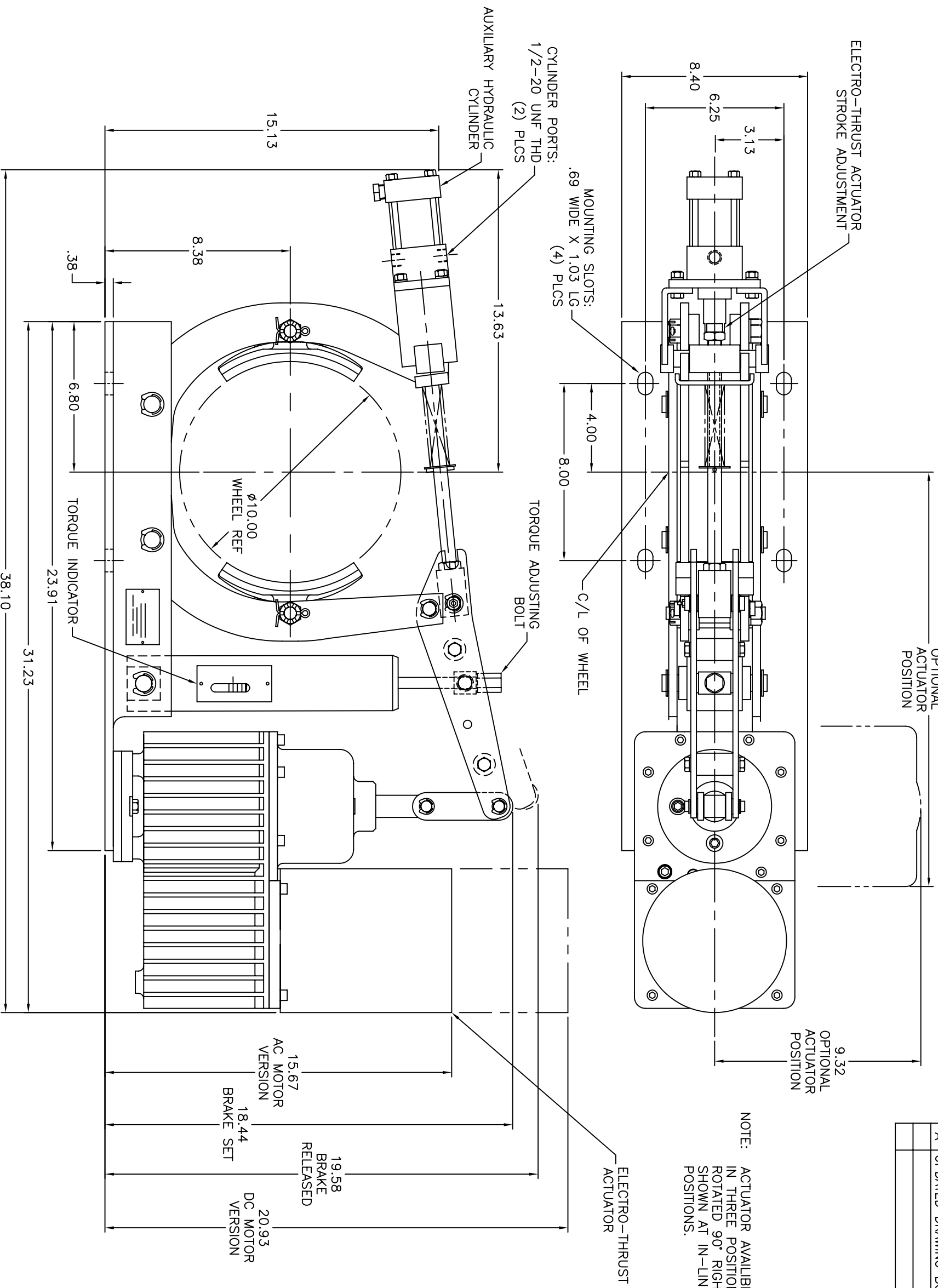


REV.	DESCRIPTION	DATE	BY
A	UPDATED DRAWING BORDER	12/09/03	J.S.B.

18.75  
OPTIONAL  
ACTUATOR  
POSITION

9.32  
OPTIONAL  
ACTUATOR  
POSITION

NOTE: ACTUATOR AVAILABLE IN THREE POSITIONS: IN-LINE, ROTATED 90° RIGHT, OR ROTATED 90° LEFT. SHOWN AT IN-LINE AND 90° RIGHT POSITIONS.



STANDARD TORQUE RATING: 200 LB.FT.

THIRD ANGLE PROJECTION	DR. J.S.B.	TITLE
SURFACE FINISH	DATE 07/29/96	DIMENSION DRAWING
TOLERANCE ALLOWANCE	APP. J.S.B.	ETH10 BRAKE
UNLESS OTHERWISE SPECIFIED:	DATE 12/09/03	
+/- 0.010 ON 2 PLACE DECIMALS	SCALE	DRAWING NO.
+/- 0.005 ON 3 PLACE DECIMALS	5/16	PD-0082100
+/- .50 MIN. ON ALL ANGLES		REV. SIZE
		A C

COPYRIGHT © 2003, AMETEK AUTOMATION & PROCESS TECHNOLOGIES. ALL RIGHTS RESERVED. DRAWING IS UNCONTROLLED. UNAUTHORIZED USE, REPRODUCTION OR DISTRIBUTION IS STRICTLY PROHIBITED BY FEDERAL LAW.

**AMETEK**  
AUTOMATION & PROCESS TECHNOLOGIES  
Clawson, MI 48017 U.S.A.