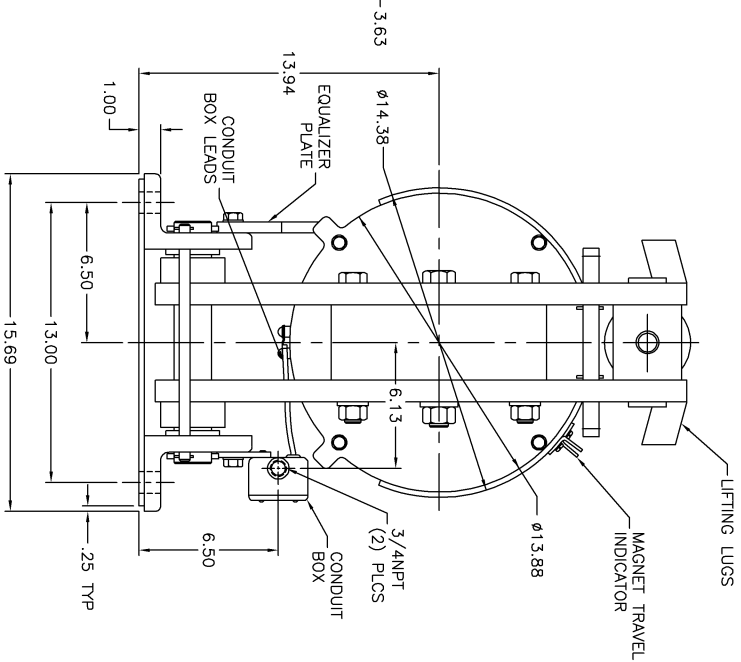
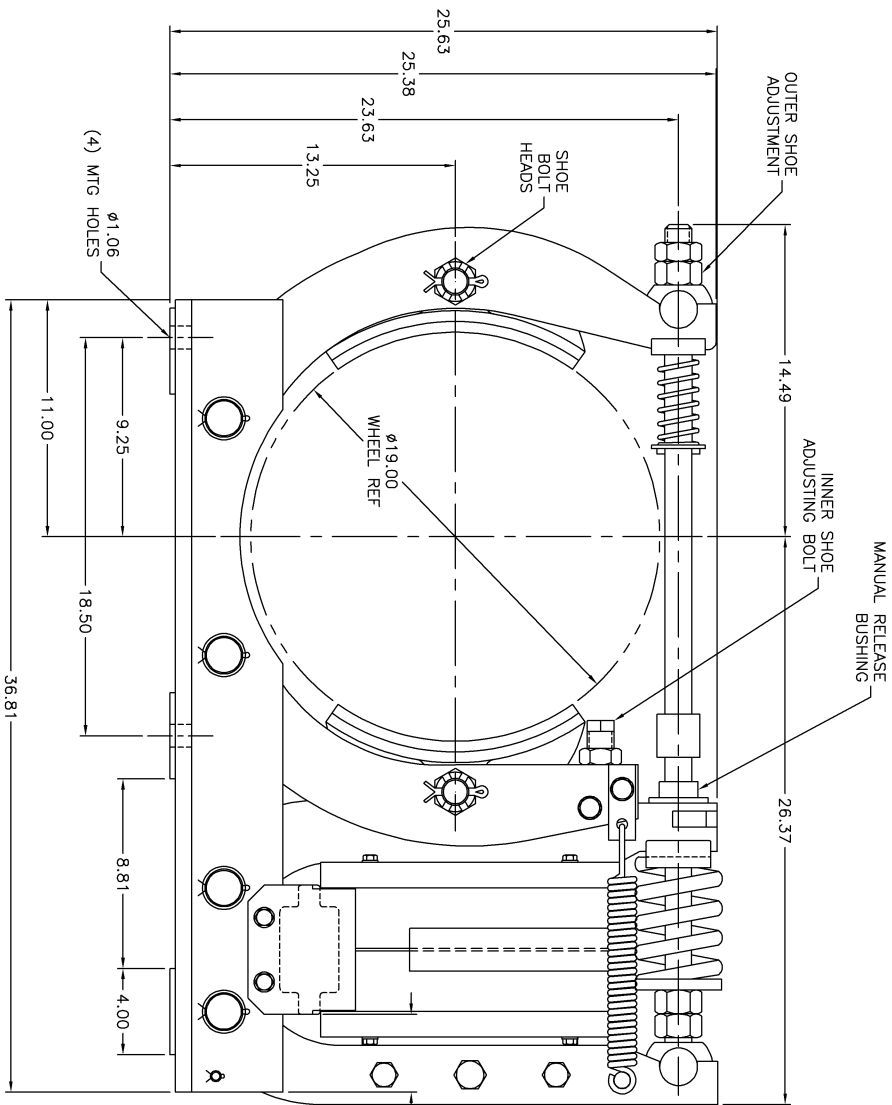
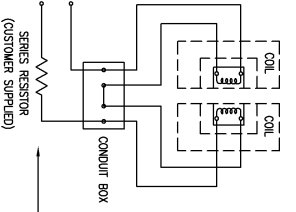


REV.	DESCRIPTION	DATE	BY
B	UPDATED DRAWING BORDER	03/08/06	J.S.B.



WIRING DIAGRAM
- SHUNT COIL -



NON-STANDARD TORQUE RATINGS:	
TORQUE LB.FT.	MAIN SPRING LENGTH (INCHES)
1300	6.44
1500	6.31

COIL DATA - SHUNT OPERATION		
CONTINUOUS OPERATION	INTERMITTENT OPERATION	
VOLTS DC 32 VDC	40 VDC	
AMPS 3.8 AMPS	4.5 AMPS	
RESISTOR REQ'D 49.5 OHMS	36.2 OHMS	
250VDC		

NOTES:

1. STANDARD TORQUE RATING: 2000 LB.FT. (MAIN SPRING LENGTH OF 6.13")
2. NORMAL MAGNET TRAVEL: .13"
3. WEIGHT OF BRAKE W/O WHEEL: 840 LBS.
4. STANDARD RIGHT HAND MOUNTING SHOWN. FOR LEFT HAND MOUNTING, POSITIONS OF CONDUIT BOX, EQUALIZER PLATE, AND SHOE BOLT HEADS ARE REVERSED.

THIRD ANGLE PROJECTION	FORM AND STYLE	DATE	TITLE
	AMETEK	04/24/91	DIMENSION DRAWING
UNLESS OTHERWISE SPECIFIED	AMETEK		TM1985
0.005 ON 3 PLACE DECIMALS			
0.010 ON 2 PLACE DECIMALS			
0.020 ON 1 PLACE DECIMALS			
1:50 MIN. ON ALL ANGLES			
AMETEK CORPORATION	DATE	SCALE	DRAWING NO.
1500 WEST 130TH STREET, CHICAGO, IL 60643	J.S.B.	1/4	E019124001
AMETEK CORPORATION	DATE	SCALE	DRAWING NO.
1500 WEST 130TH STREET, CHICAGO, IL 60643	J.S.B.	1/4	E019124001
AMETEK CORPORATION	DATE	SCALE	DRAWING NO.
1500 WEST 130TH STREET, CHICAGO, IL 60643	J.S.B.	1/4	E019124001